

Engagement and Insight Team
Greater Manchester Combined Authority
Tootal Building
56 Oxford Street
Manchester
M1 6EU

2 May 2025

Dear Occupier,

Atom Valley Northern Gateway Mayoral Development Corporation Proposal

Public consultation open to Sunday 8th June 2025

I am writing to you today to update you on a public consultation that has been launched to gather views from local residents and businesses. The consultation covers our proposals to create a new Mayoral Development Corporation (MDC) in Bury and Rochdale called the “Atom Valley Northern Gateway” MDC.

Learning from previous work in Stockport, and from partners in other areas, we are looking to develop an MDC across Bury and Rochdale, covering the Northern Gateway sites in Atom Valley.

More information, and access to the consultation, is available at www.gmconsult.org.
You can also use the QR code at the bottom of this letter to access the consultation.

The aim of a MDC is to bring about regeneration, growth and prosperity – as it has done in Stockport. More information on Stockport’s MDC is available on the consultation webpage.

Greater Manchester is a rapidly growing city-region, and its businesses need space to grow. Our proposals aim to support this ambition.

The Northern Gateway is a collection of sites with development plans to provide space suitable for high-quality domestic and international businesses, including those operating in the advanced manufacturing and materials sector. This will drive significant investment into the local area and aims to create high-quality jobs.

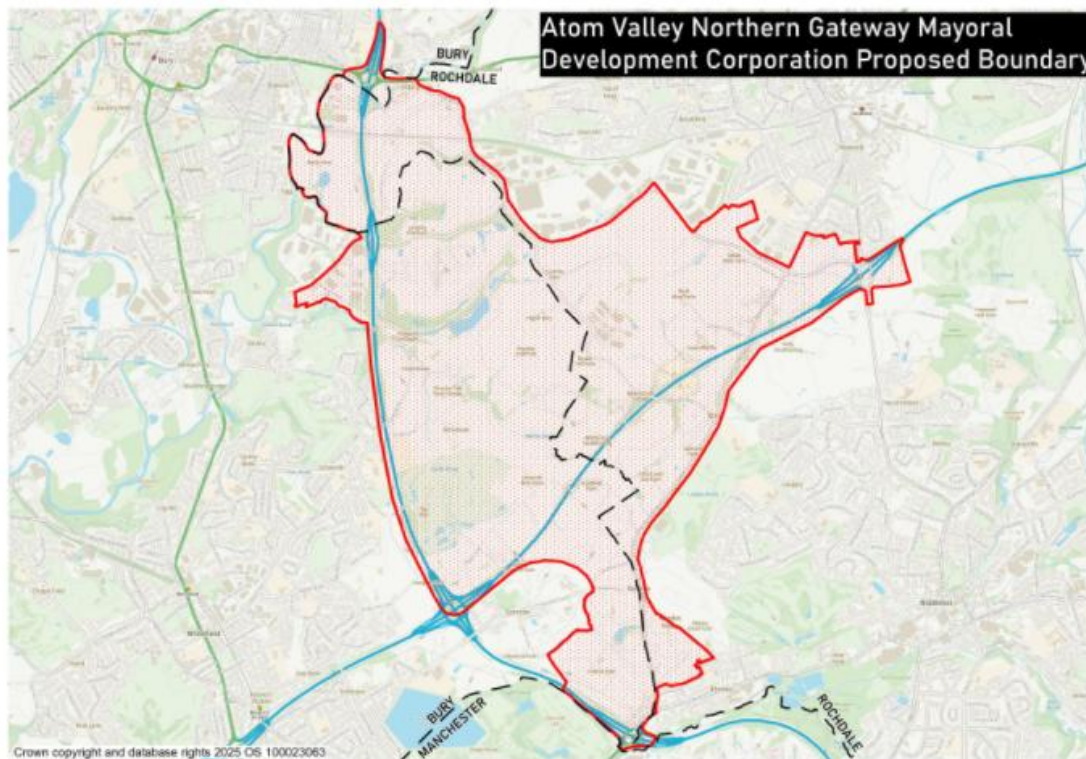
The proposals for the Northern Gateway have the potential to make significant contributions to growth by creating 20,000 new jobs, around 3,000 new homes, and £1.1 billion in Gross Value Added for the Greater Manchester economy.

We want this part of Greater Manchester to be world renowned for innovation and development, as well as helping to create a thriving city-region.

This economic and industrial ambition needs to be supported by the delivery of new homes, as well as improved social and transport infrastructure. We need to make sure that local

people can benefit from this transformational change across Rochdale and Bury. We will work with both residents and partners to help to shape and deliver it for the best possible outcomes.

Proposed Atom Valley Northern Gateway Mayoral Development Corporation Area:



A Mayoral Development Corporation for Northern Gateway:

The proposed Atom Valley Northern Gateway MDC boundary is shown in the map above. It occupies a strategic location adjacent to the M60, M62 and M66 and includes developments that are anticipated to deliver 1.2 million square metres of employment floorspace, around 3,000 new homes, including affordable homes, and improvements to local amenities and infrastructure.

The MDC in Bury and Rochdale would be run by a Board that includes local democratically elected Members along with independent development experts to ensure a balance between accountability and technical expertise.

We're proposing the MDC would work to secure benefits for local people and businesses. The MDC would want to work with property owners, investors and developers to help to deliver the ambitious plan and help to realise the benefits of developing the Northern Gateway.

During the consultation, we want to hear your views on –

- The creation of the Northern Gateway MDC
- If you think our proposals will help to support development, growth and improvements in Bury and Rochdale
- If we've got the proposed boundaries of the MDC right – and if not, what we need to consider changing.

Details about how you access the consultation and feed back your views are below.

Thank you for your time and consideration,

Andy Burnham
Mayor of Greater Manchester

Responding to the consultation -

A consultation covering the development of a MDC for Northern Gateway, along with the boundaries proposed will run from Friday 25th April to Sunday 8th June 2025 and will help to inform a final decision on how we progress.

The consultation is available at www.gmconsult.org and we welcome feedback regardless of whether you support the MDC proposal or not.

If you require a hard copy of the consultation materials or to access the materials using a translation service, please contact engagement@greatermanchester-ca.gov.uk or write to the engagement and insights team at Greater Manchester Combined Authority at the address above.

If you have any questions at all, please look at our Frequently Asked Questions document first which is available on the consultation website above and if you don't find the response you need, please contact us via the above email address.

You can access the consultation and other useful information, including the press release and the GMCA public meeting paper, by scanning the QR code below.

