

Making journeys between Salford Crescent and MediaCityUK better

Tell us what you think

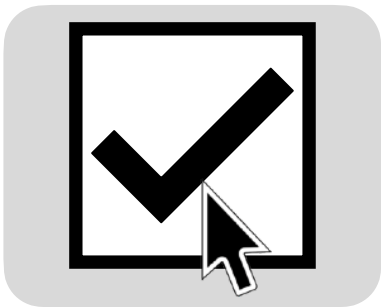


Easy
Read

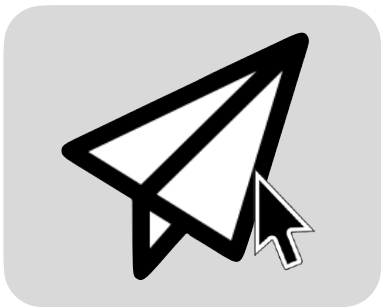
How to use this survey on a computer



You can complete this survey on your computer. First you will need to download it.



When you open the survey on your computer, you will be able to click on the tick boxes and write in the text boxes.



When you have finished the survey, save it to your computer and email a copy to:

hello@beenetwork.com



You can also ask for the survey in a paper format by:

- Emailing hello@beenetwork.com



- Phoning 0161 244 1444

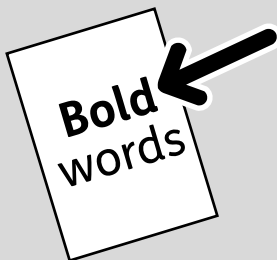
Easy Read



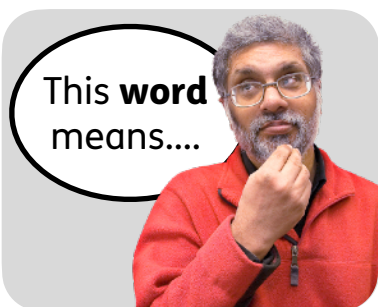
This is an Easy Read version of a survey information. It may not include all of the information but it will tell you about the important parts.



This Easy Read booklet uses easier words and pictures. Some people may still want help to read it.



Some words are in **bold** - this means the writing is thicker and darker. These are important words in the booklet.



Sometimes if a bold word is hard to understand, we will explain what it means.



[Blue and underlined](#) words show links to websites and email addresses. You can click on these links on a computer.

What is in this booklet

About this booklet.....	5
Our plan.....	7
How we will make the plan happen	9
Help with the survey	11
Survey questions	15
Questions about you	71
How to send us your answers.....	84
What will happen next	85



You can fill in a quick survey to say what you think about this Easy Read booklet:
<https://www.easy-read-online.co.uk/easy-read-feedback-survey>

About this booklet



We are Transport for Greater Manchester.



We run the Bee Network which includes buses, trams, walking, wheeling and cycling, and in the future will also include trains.

This is called **public transport**.



Good public transport is important for people and businesses in Greater Manchester.



We want to make sure that the Bee Network makes it easier for people to get to where they need to go.

The logo for Salford City Council, featuring the text "Salford City Council" in white on a magenta rectangular background, which is centered within a larger white rounded rectangle with a black border.

Salford City Council

We are working with Salford City Council to improve the main route between Salford Crescent and MediaCityUK, which the 50 bus uses.



The route goes through four wards in Salford: Ordsall, Pendleton & Charlestown, Weaste & Seedley, and Quays.



We are planning some changes to make the route better, and want to know what you think.

Our plan

To make journeys safer and easier, we plan to:



- Put a new **bus only restriction** on South Langworthy Road.

A **bus only restriction** is a short bit of road where only buses, trams, taxis or cycles can go.



- Make bus stops along the whole route better.



- Put new pedestrian and cycle crossings at important places that need them.



- Build separate cycle tracks on part of the route.



- Make some junctions better and safer for people who walk, wheel or cycle.

We think these changes will:



- Make bus journeys quicker, and run on time.



- Make different types of transport work together better.



- Make safer routes for people to walk, wheel or cycle.



We have £23.4 million from central government to spend on making the route better.

How we will make the plan happen



We will probably work on the plan in different parts, called **phases**.



We think that the changes between Eccles New Road and MediaCityUK will make the most difference.

We think changes in this area will do the most to:



- Make transport quicker and on time.



- Encourage more people to walk, wheel or cycle.



But we want to know what you think before we make any decisions.



What you tell us will make sure that we do what people in the local area want most.

Help with the survey



You can get extra information about the survey on our website:

<https://tfgm.com/projects/improving-journeys/salford-crescent-to-mediacity>

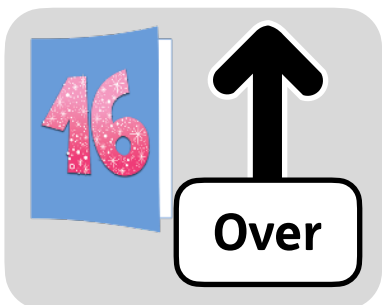
This information includes:



- What you said about our ideas last time we asked, and what we did about it.



- How our ideas fit with other plans for Salford and Greater Manchester.



You need to be 16 or over to complete this survey.

If you need help with the survey, you can contact us by:



- Email: hello@beenetwork.com



- Phone: 0161 244 1444



You can phone us between 7:00am and 8:00pm on Monday to Friday, or 8:00am to 8:00pm at the weekend or on public holidays.



You can phone us to fill in the survey over the phone.

You can also phone us to:



- Get help if you do not speak English.



- Ask if you want a copy of this booklet in another format.



- Ask for a paper copy of the survey or the extra information to be sent to you.



- Ask about the public drop-in sessions. There is more information about these on the next page.

Public drop-in sessions



We will be running sessions for people to come and ask questions about our ideas, without making an appointment.

There will be sessions in person:



- On Tuesday 3 February 2026, from 9:30am to 12:30pm, at:

Langworthy Cornerstone
451 Liverpool Street
Salford
M6 5QQ



- On Thursday 5 February 2026, from 4:30pm to 7:30pm, at:

Salford Watersports Centre
15 The Quays
Salford
M50 3SQ

Survey questions



The first questions are about how and when you travel between MediaCityUK and Salford Crescent.



Then there are questions about 11 different parts of the route.

Each part of the survey has:



- A map of the area.



- Information about our plan for that area.

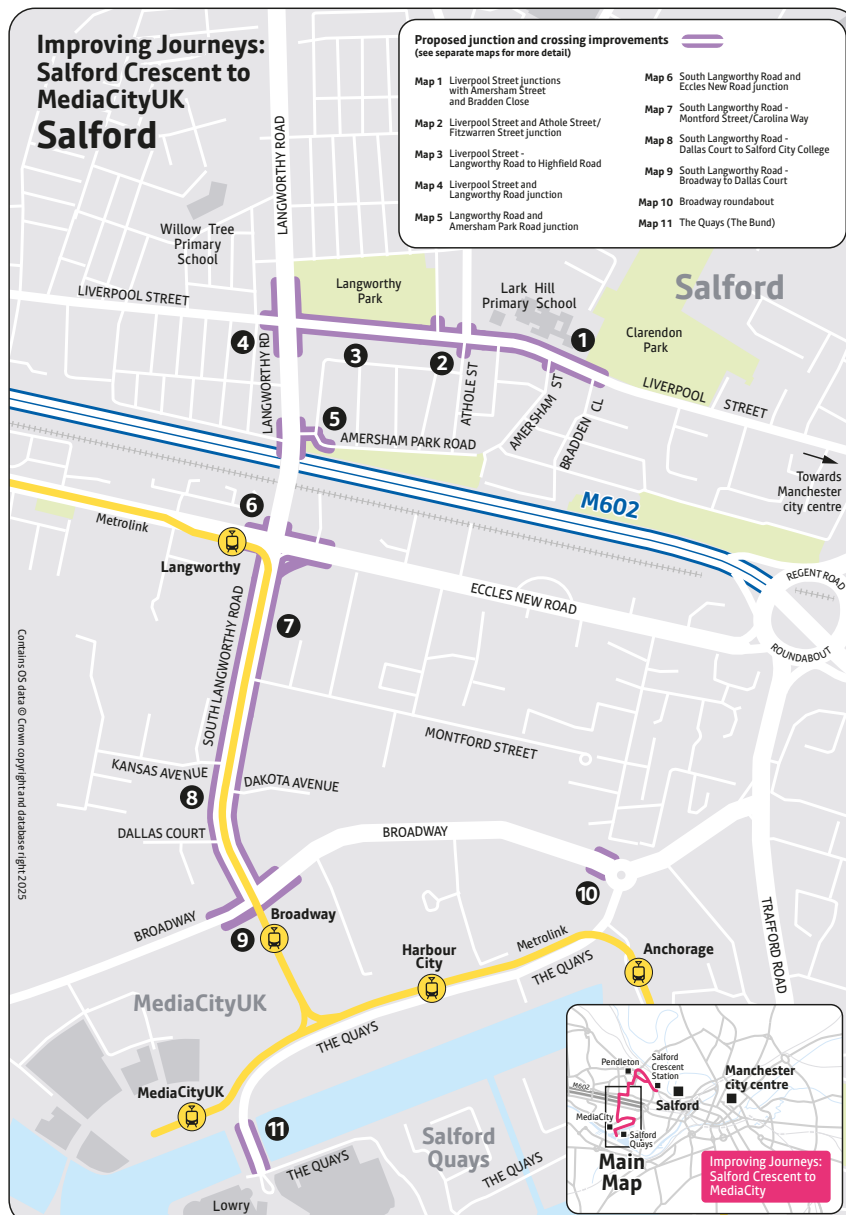


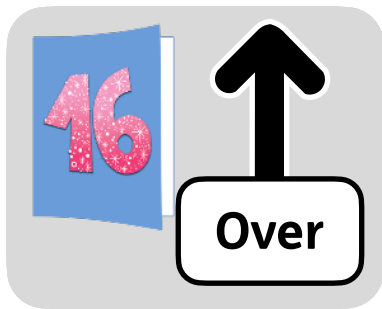
- A question or questions for you to tell us what the changes will mean for you.



You do not have to answer any of the questions you do not want to.

Salford Crescent to MediaCityUK





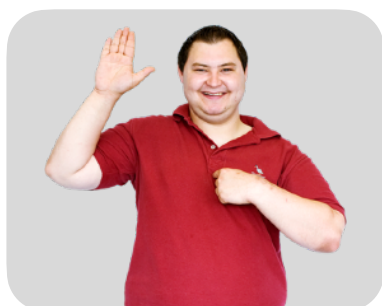
Question 1: Are you aged 16 or over?

☐

Yes (please continue with the survey)

☐

No (this survey is only available for those aged 16 or over)



Question 2: Are you answering the questions...

Please tick 1 box.

☐

As someone who lives in Salford

☐

On behalf of a business I own or manage in and around Salford - please go to Question 7, on page 23

☐

As someone who lives in the area and on behalf of a local business in and around Salford

☐

For an organisation like a school, college, NHS organisation, or local group

☐

For a different reason - please tell us here:



Question 3: Do you travel between Salford Crescent and MediaCityUK or part of this route?
Please tick all the boxes that apply to you.

☐

Yes, I travel between Salford Crescent and MediaCityUK

☐

Yes, I travel to Salford Crescent along this route

☐

Yes, I travel to MediaCityUK along this route

☐

Yes, I travel part of the route

☐

No, I do not travel along this route
- please go to page 37



Question 4: What is the main reason for your journey?

Please tick 1 box.

☐

I live along the route

☐

I work along the route

☐

I go to school, college or university along the route

☐

I travel through this area

☐

To visit family or friends

☐

For a hobby or sport

☐

To go shopping

☐

To visit a health site, a council service like a library, or a government building

☐

To visit a religious or spiritual building

☐

For a different reason - please tell us here:



Question 5: How often do you travel along this route?

Please tick 1 box.

☐

Every day

☐

At least once a week

☐

Between 4 and 6 days per week

☐

Between 2 and 3 days per week

☐

Between once a week and once a month

☐

Less than once a month



Question 6: How do you usually travel to Salford Crescent, MediaCityUK or anywhere along this route?

Please tick all the boxes that apply to you.

☐

Bus

☐

Tram

☐

Train

☐

Walking

☐

Wheeling

☐

Cycling

☐

Scooter

☐

Driving my own vehicle

☐

Driving a car, van, or motor vehicle for a business, like delivering goods

There are more answers on the next page.

☐

Driving a taxi or private hire vehicle

☐

As a passenger in a car, van, or taxi or private hire vehicle

☐

A different way - please tell us here:

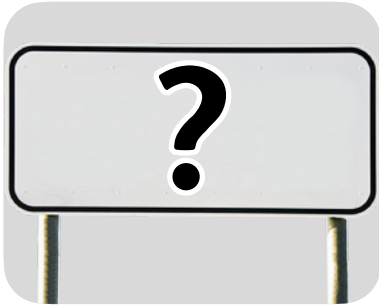


Questions 7 to 25, on pages 23 to 36, are for people answering for a business.

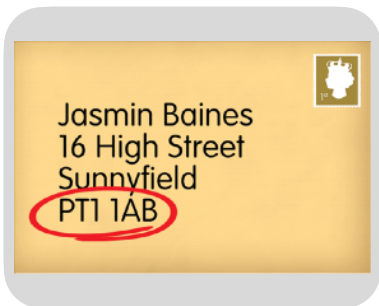


If you are answering as someone who lives in Salford, please go to page 37.

About the business



Question 7: What is the name of the business or organisation?



Question 8: What is the postcode of the business?



Question 9: How long has the business been running in Salford?

Please tick 1 box.

☐

Less than 6 months

☐

Between 6 months and 1 year

☐

1 to 2 years

☐

2 to 4 years

☐

More than 4 years



Question 10: What does the business do in Salford?

Please tick all the boxes that apply.

☐

Making things

☐

Selling things, including selling or fixing cars

☐

Building, including building work on people's homes

☐

Selling to other businesses

☐

Moving or storing things

☐

Giving information

☐

Dealing with money

☐

Other work that needs special skills or training

☐

Helping other businesses

☐

Selling food or somewhere to stay

☐

Something else - please tell us here:



Question 11: What days does the business work on this site?

☐

Weekdays - Monday to Friday

☐

Weekends - Saturday to Sunday



Question 12: What times does the business work on this site?

☐

Standard business or selling hours, like 8:00am to 6:00pm

☐

24 hours

☐

Other times - please tell us here:

About the staff



Question 13: How many people work at this site?

☐

1 to 4

☐

5 to 9

☐

10 to 19

☐

20 to 49

☐

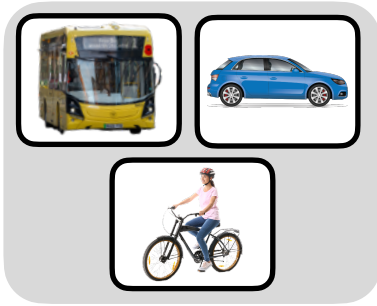
50 to 249

☐

250 or more

☐

I do not know



Question 14: How do workers usually travel to or from this site?

Please tick all the boxes that apply.

☐

Walk

☐

Wheel, like by wheelchair or mobility scooter

☐

Cycle, including e-bike, tricycle or handcycle

☐

Motorbike or moped

☐

Car or van

☐

Taxi

☐

Bus

☐

I do not know

☐

Other ways - please tell us here:

About getting deliveries



Question 15: Does the business get deliveries at this site?

☐

Yes

☐

No - go to Question 19 on page 31



Question 16: How often does the business usually get deliveries at this site?

☐

More than once a day

☐

Once a day

☐

At least 3 times a week

☐

At least once a week

☐

At least once every 2 weeks

☐

At least once a month

☐

Less often



Question 17: Please tell us the times of day when the business usually gets deliveries.

Please tick all that apply.

☐

6:00am to 8.59am

☐

9:00am to 11.59am

☐

12:00pm to 2.59pm

☐

3:00pm to 5.59pm

☐

6:00pm to 8.59pm

☐

9:00pm to 11.59pm

☐

12:00am to 5.59am

☐

Other times - please tell us here:



Question 18: The business gets deliveries at this site by...

Please tick all that apply.

☐

Bike, e-bike, scooter or e-scooter

☐

Motorbike or moped

☐

Car or small van

☐

Large van

☐

Lorry or Heavy Goods Vehicle, HGV for short

☐

I do not know

☐

Other ways - please tell us here:

About making deliveries



Question 19: Does the business make deliveries from this site?

☐

Yes

☐

No - go to question 23 on page 34



Question 20: How often does it usually make deliveries from this site?

☐

More than once a day

☐

Once per day

☐

At least 3 times a week

☐

At least once a week

☐

At least once every 2 weeks

☐

At least once a month

☐

Less often



Question 21: Please tell us all the times of day when someone usually leaves the site to make deliveries.

Please tick all that apply.

☐

6:00am to 8.59am

☐

9:00am to 11.59am

☐

12:00pm to 2.59pm

☐

3:00pm to 5.59pm

☐

6:00pm to 8.59pm

☐

9:00pm to 11.59pm

☐

12:00am to 5.59am

☐

Other times - please tell us here:



Question 22: Deliveries are made from this site by...

Please tick all that apply.

☐

Bike, e-bike, scooter or e-scooter

☐

Motorbike or moped

☐

Car or small van

☐

Large van

☐

Lorry or Heavy Goods Vehicle, HGV for short

☐

I do not know

☐

Other ways - please tell us here:

About customers and visitors



Question 23: Do customers or visitors come to the site?

☐

Yes

☐

No - go to question 25 on page 36



Question 24: How do customers or visitors travel to the site?

Please tick all that apply.

☐

Walk

☐

Wheel, like by wheelchair or mobility scooter

☐

Cycle, including e-bike, tricycle, and handcycle

There are more answers on the next page

☐

Motorbike or moped

☐

Car or van

☐

Taxi

☐

Bus

☐

I do not know

☐

Other ways - please tell us here:

About your job



Question 25: What is your job in the business or organisation?

☐

Owner

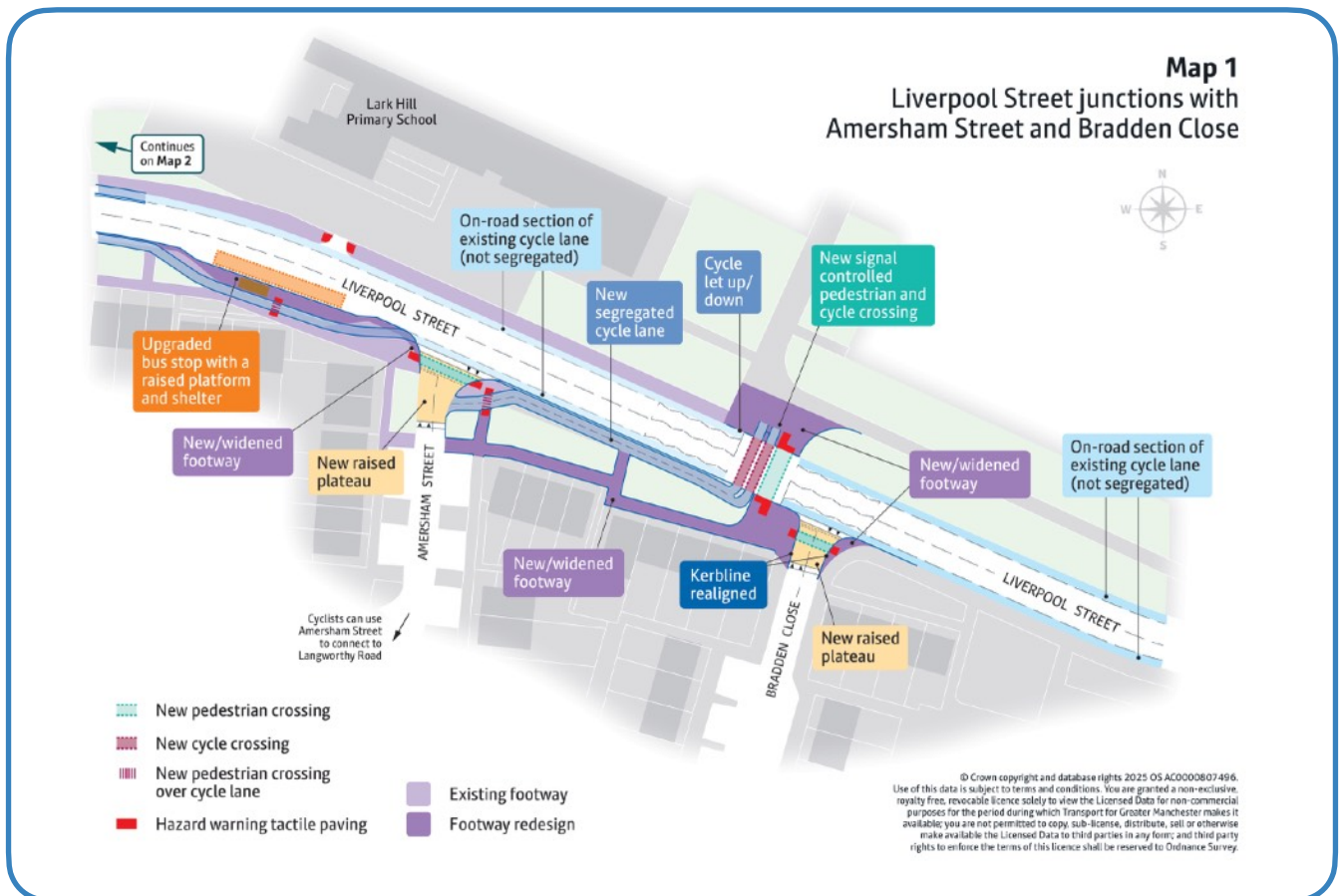
☐

Manager

☐

Other role - please tell us here:

Map 1 - Liverpool Street junctions with Amersham Street and Bradden Close



The changes we want to make on Map 1 are:



- Build a new crossing on Liverpool Street for people who walk or cycle, to link it to Amersham Street, Amersham Park Road and Langworthy Road.



- The crossing will also link to planned houses and make it easier to walk, wheel or cycle between Pendleton Centre and Liverpool Street.



Question 26: Please tell us the difference our ideas for Liverpool Street Junctions with Amersham Street and Bradden Close on Map 1 would make to you, the journeys you make, or your business or organisation in the box below:

Map 2 - Liverpool Street & Athole Street / Fitzwarren Street Junction

Map 2
Liverpool Street & Athole Street/
Fitzwarren Street Junction



© Crown copyright and database rights 2025 OS AC0000807496. Use of this data is subject to terms and conditions. You are granted a non-exclusive, royalty free, revocable licence solely to view the Licensed Data for non-commercial purposes for the period during which Transport for Greater Manchester makes it available; you are not permitted to copy, sub-license, distribute, sell or otherwise make available the Licensed Data to third parties in any form; and third party rights to enforce the terms of this licence shall be reserved to Ordnance Survey.

The changes we want to make on Map 2 are:



- Make the junction better and safer for people who walk or cycle.



- Build a cycle track to keep cyclists away from people walking and vehicles.



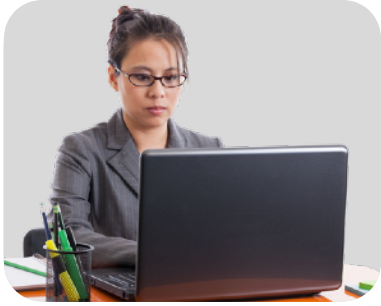
- Put crossings with traffic lights on all parts of the junction to keep people safe and away from cyclists and vehicles.



We might need to use some land near the road to make the changes.



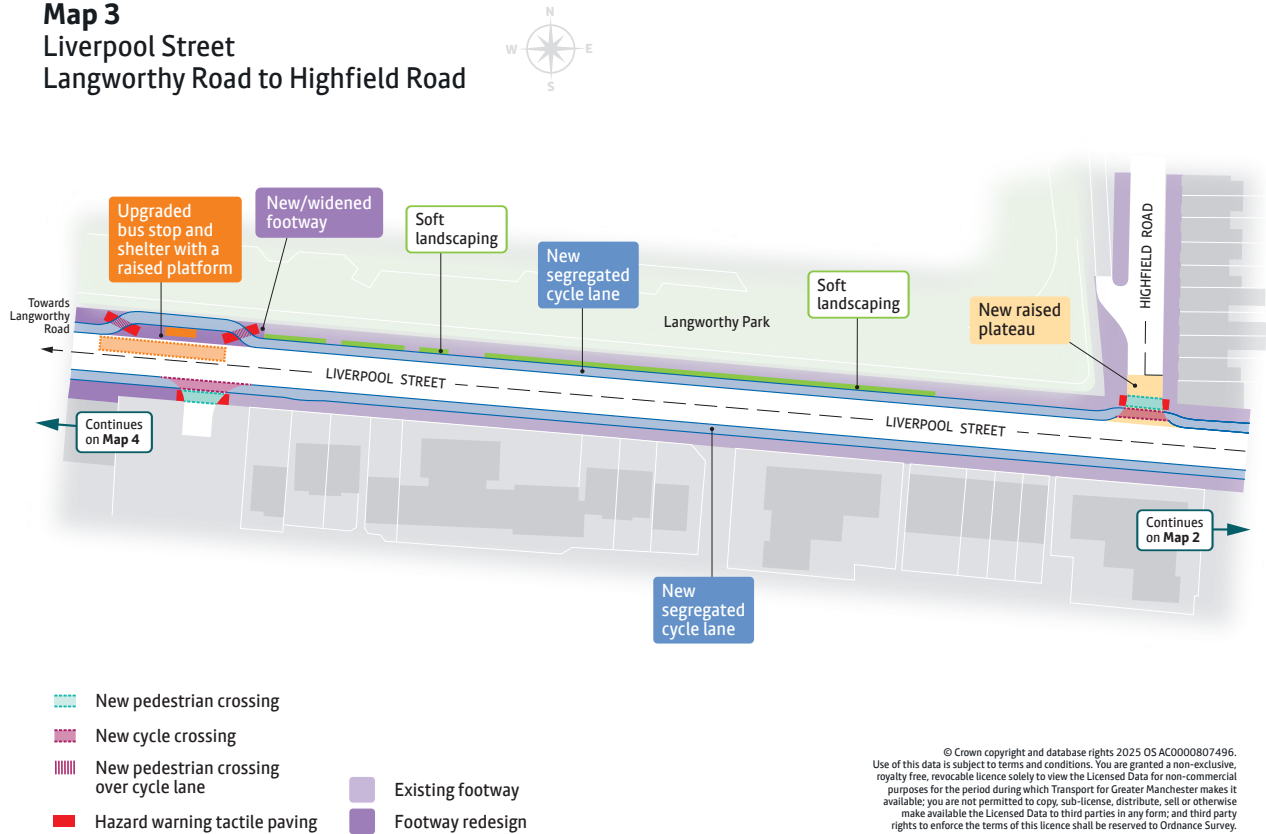
If we do, we will talk to everyone about our plans.



Question 27: Please tell us the difference our ideas for Liverpool Street & Athole Street/ Fitzwarren Street Junction on Map 2 would make to you, the journeys you make, or your business or organisation in the box below:

Map 3 - Liverpool Street from Langworthy Road to Highfield Road

Map 3
Liverpool Street
Langworthy Road to Highfield Road



The changes we want to make on Map 3 are:



- Change the cycle track to keep cyclists away from people walking and vehicles.



- Change junctions to smaller roads to make them safer for people walking or cycling.



- Plant trees and bushes, and make drains better, to make the area look better and make it easier for people to walk, wheel and cycle.



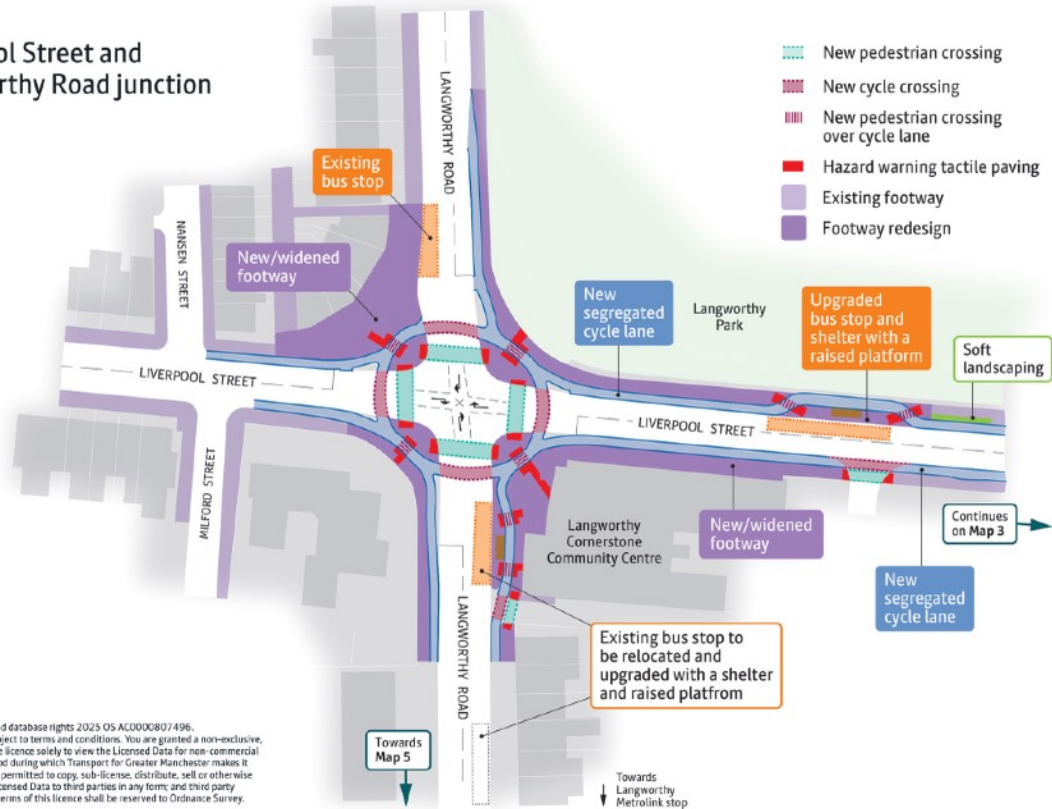
- Some trees and plants will be removed, but new areas with better drains will be added to deal with water and waste.



Question 28: Please tell us the difference our ideas for Liverpool Street from Langworthy Road to Highfield Road, on Map 3 would make to you, the journeys you make, or your business or organisation in the box below:

Map 4 - Liverpool Street and Langworthy Road junction

Map 4
Liverpool Street and
Langworthy Road junction



The changes we want to make on Map 4 are:



- Make the junction better and safer for people who walk or cycle.



- Build a cycle track to keep cyclists away from people walking and vehicles.



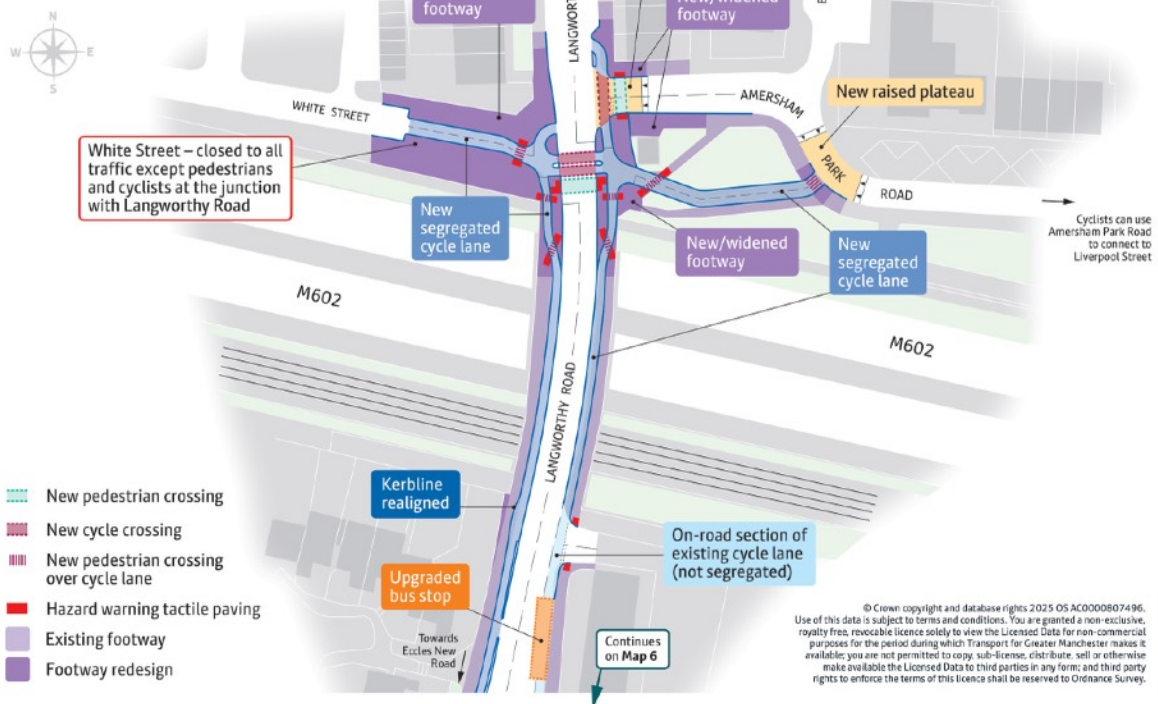
- Put crossings with traffic lights on all parts of the junction to keep people safe and away from cyclists and vehicles.



Question 29: Please tell us the difference our ideas for Liverpool Street and Langworthy Road junction on Map 4 would make to you, the journeys you make, or your business or organisation in the box below:

Map 5 - Langworthy Road and Amersham Park Road junction

Map 5
Langworthy Road and
Amersham Park Road junction



The changes we want to make on Map 5 are:



- Make new separate cycle tracks to connect Eccles New Road to a safe crossing north of the M602 bridge, away from pedestrians and cars.



- Make a crossing to link Langworthy Road with quieter streets like White Street and Amersham Park Road, and on to Liverpool Street.

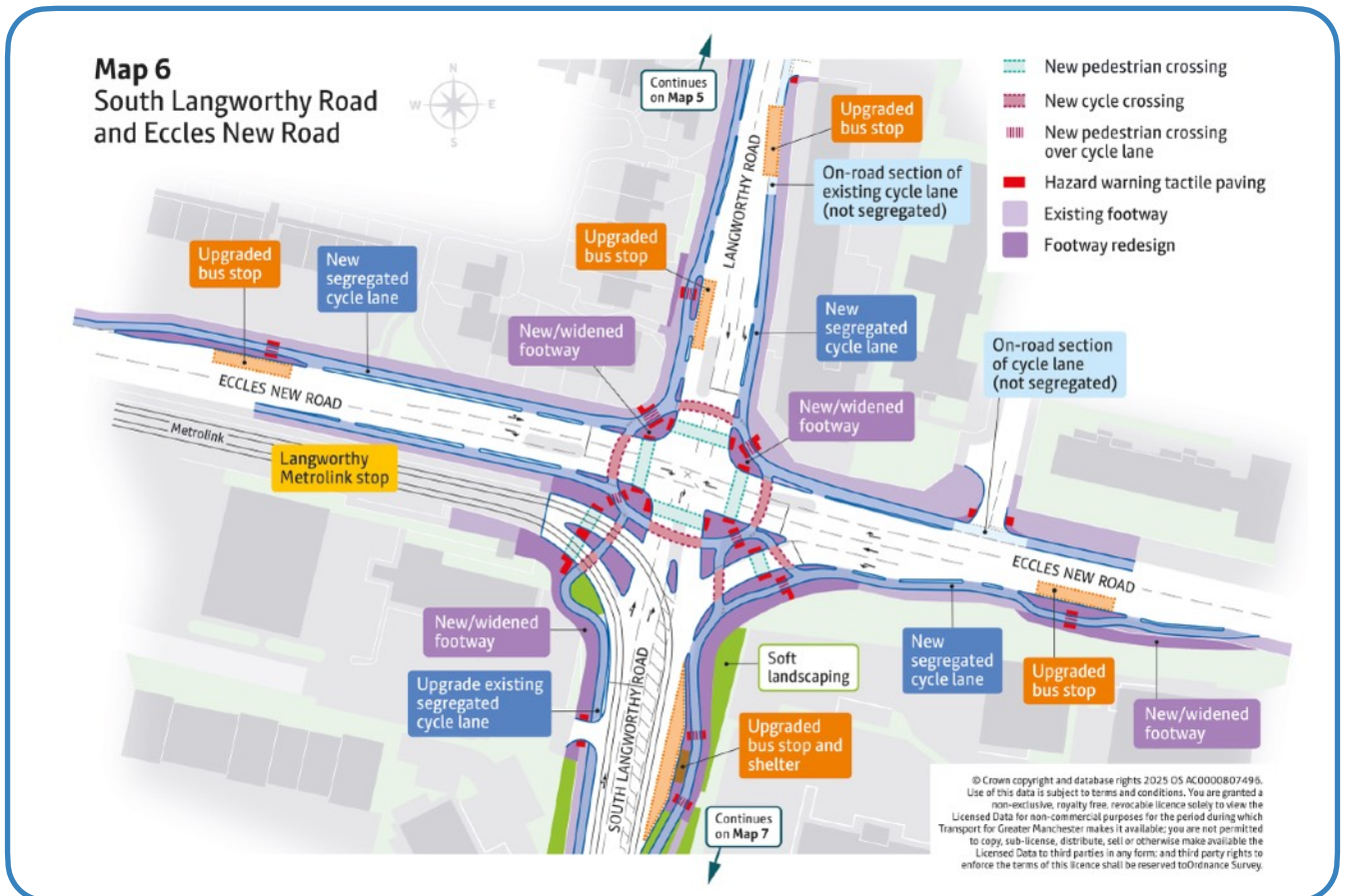


- Cyclists will be asked to use Amersham Park Road as a quieter, safer route towards Liverpool Street.



Question 30: Please tell us the difference our ideas for Langworthy Road and Amersham Park Road junction on Map 5 would make to you, the journeys you make, or your business or organisation in the box below:

Map 6 - South Langworthy Road and Eccles New Road



The changes we want to make on Map 6 are:



- Make the junction better and safer for people who walk or cycle.



- Put a new bus only restriction on South Langworthy Road to reduce traffic and make more space for people to walk and cycle.



- Stop vehicles turning right from Langworthy Road to Eccles New Road to help traffic move more easily.



- Build a cycle track to keep cyclists away from people walking and vehicles.



- Put crossings with traffic lights on all parts of the junction to keep people safe and away from cyclists and vehicles.









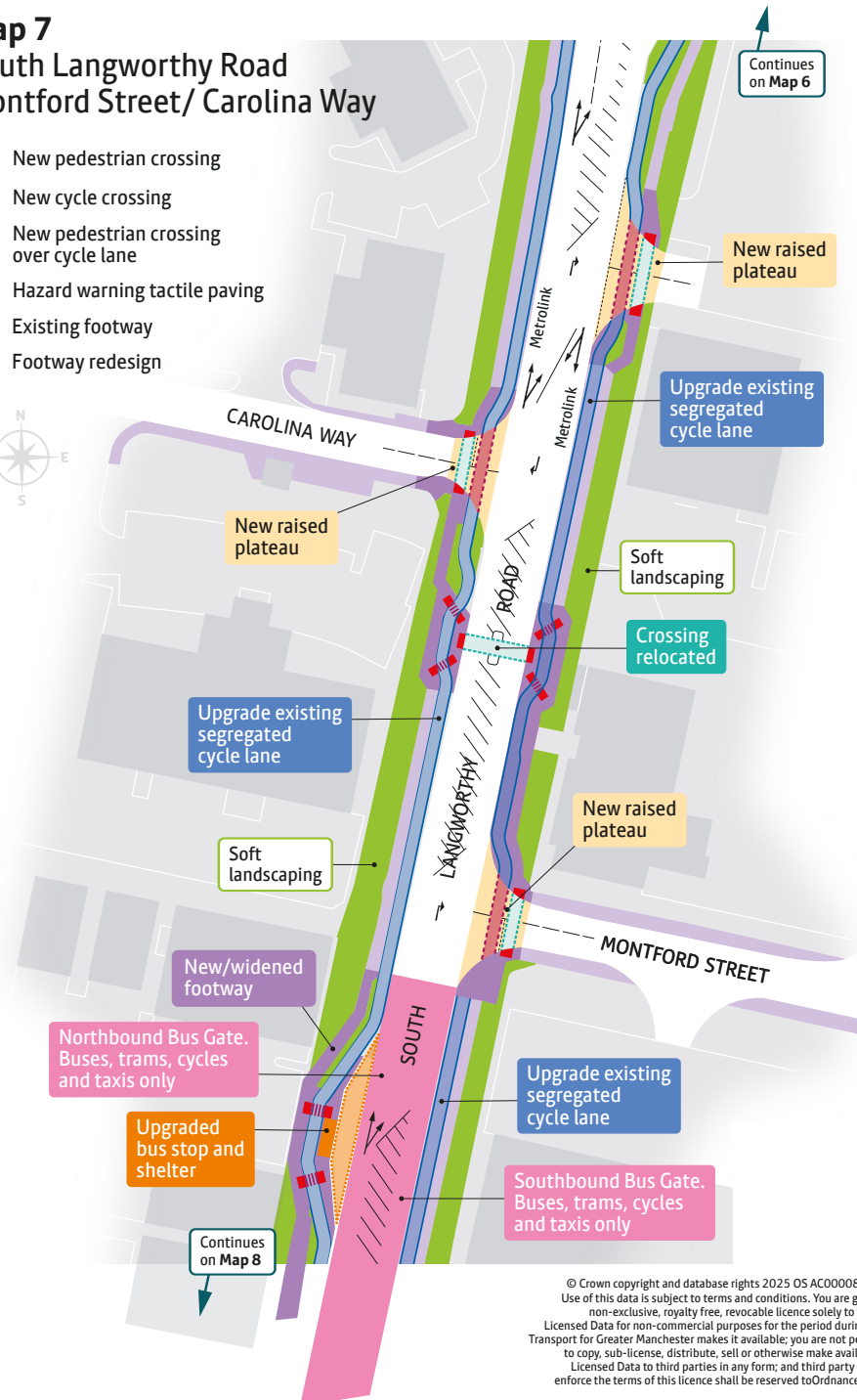
Question 31: Please tell us the difference our ideas for South Langworthy Road and Eccles New Road Junction on Map 6 would make to you, the journeys you make, or your business or organisation in the box below:

Map 7 - South Langworthy Road at the junctions with Montford Street and Carolina Way

Map 7

South Langworthy Road
Montford Street/ Carolina Way

-  New pedestrian crossing
-  New cycle crossing
-  New pedestrian crossing over cycle lane
-  Hazard warning tactile paving
-  Existing footway
-  Footway redesign



© Crown copyright and database rights 2025 OS AC0000807496.
Use of this data is subject to terms and conditions. You are granted a
non-exclusive, royalty free, revocable licence solely to view the
Licensed Data for non-commercial purposes for the period during which
Transport for Greater Manchester makes it available; you are not permitted
to copy, sub-licence, distribute, sell or otherwise make available the
Licensed Data to third parties in any form; and third party rights to
enforce the terms of this licence shall be reserved to Ordnance Survey.

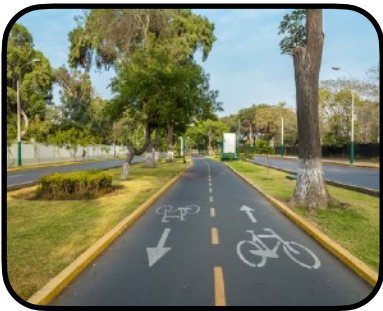
The changes we want to make on Map 7 are:



- Put a bus gate between Kansas Avenue and Montford Street to reduce traffic and help buses and trams run on time.



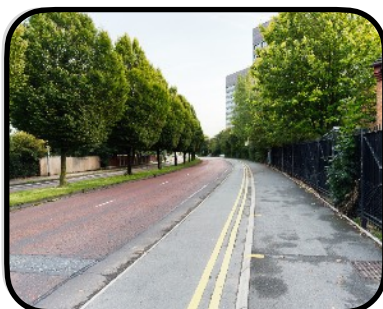
- Change the cycle track on South Langworthy Road to keep cyclists away from people walking and vehicles.



- Join the cycle track to the cycle tracks on Broadway and Eccles New Road.



- Change junctions to smaller roads to make them safer for people walking or cycling.



- Plant trees and bushes to make the area look better.

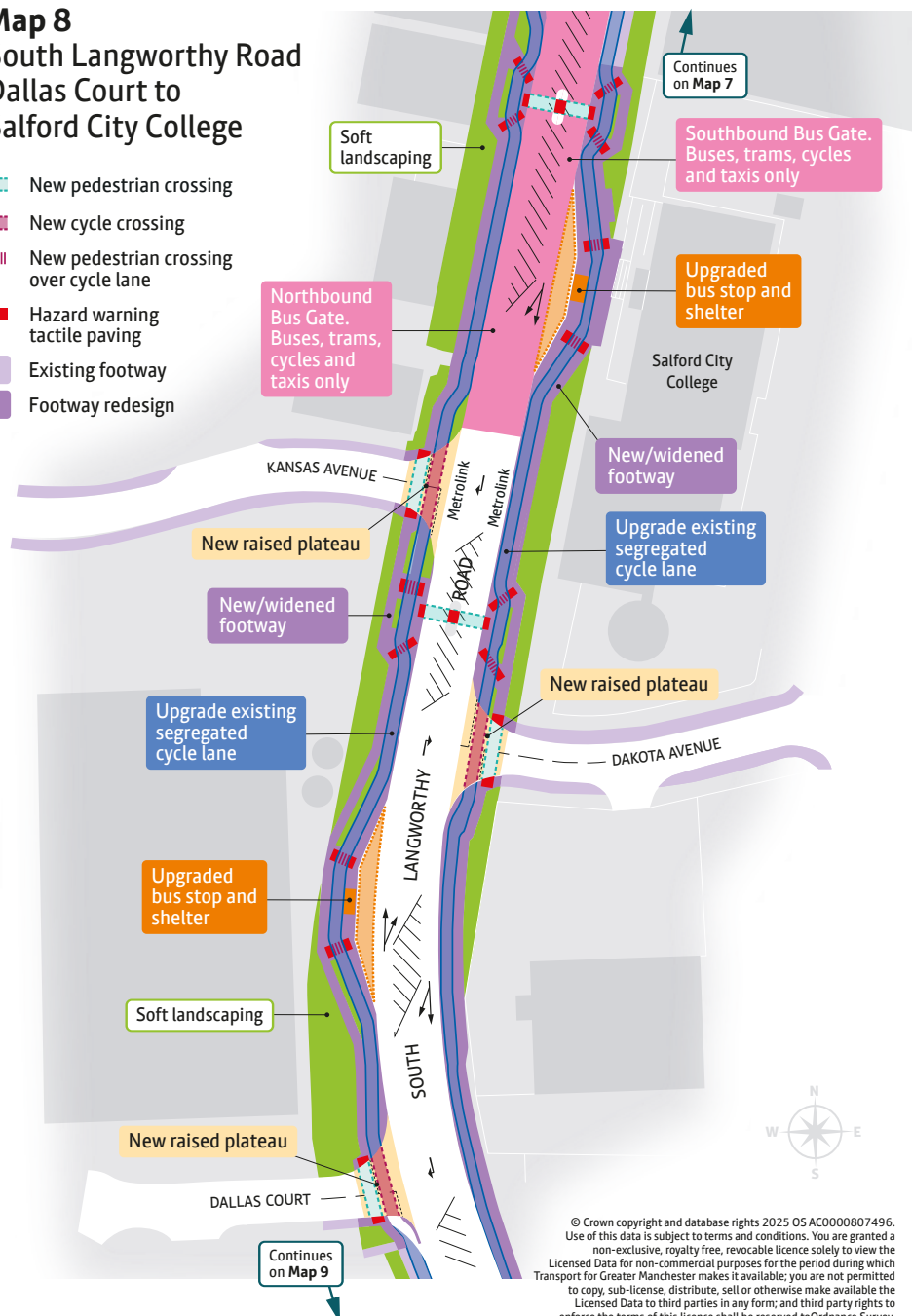


Question 32: Please tell us the difference our ideas for South Langworthy Road at the junctions with Montford Street and Carolina Way on Map 7 would make to you, the journeys you make, or your business or organisation in the box below:

Map 8 - South Langworthy Road, from Dallas Court to Salford City College

Map 8
South Langworthy Road
Dallas Court to
Salford City College

-  New pedestrian crossing
-  New cycle crossing
-  New pedestrian crossing over cycle lane
-  Hazard warning tactile paving
-  Existing footway
-  Footway redesign



© Crown copyright and database rights 2025 OS AC0000807496.
Use of this data is subject to terms and conditions. You are granted a
non-exclusive, royalty free, revocable licence solely to view the
Licensed Data for non-commercial purposes for the period during which
Transport for Greater Manchester makes it available; you are not permitted
to copy, sub-license, distribute, sell or otherwise make available the
Licensed Data to third parties in any form; and third party rights to
enforce the terms of this licence shall be reserved to Ordnance Survey.

The changes we want to make on Map 8 are:

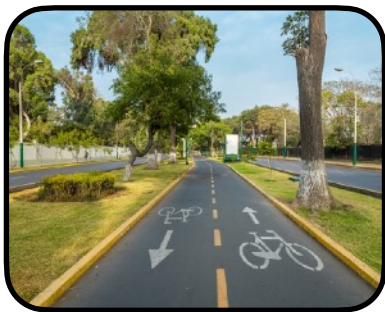


- Put a new bus only restriction between Kansas Avenue and Montford Street to reduce traffic and help buses and trams run on time.

Cars would still be able to travel through Eccles New Road and Broadway.



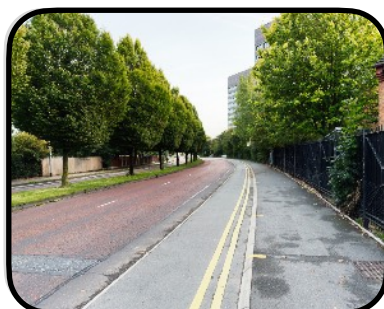
- Change the cycle track on South Langworthy Road to keep cyclists away from people walking and vehicles.



- Join the cycle track to the cycle tracks on Broadway and Eccles New Road.



- Change junctions to smaller roads to make them safer for people walking or cycling.

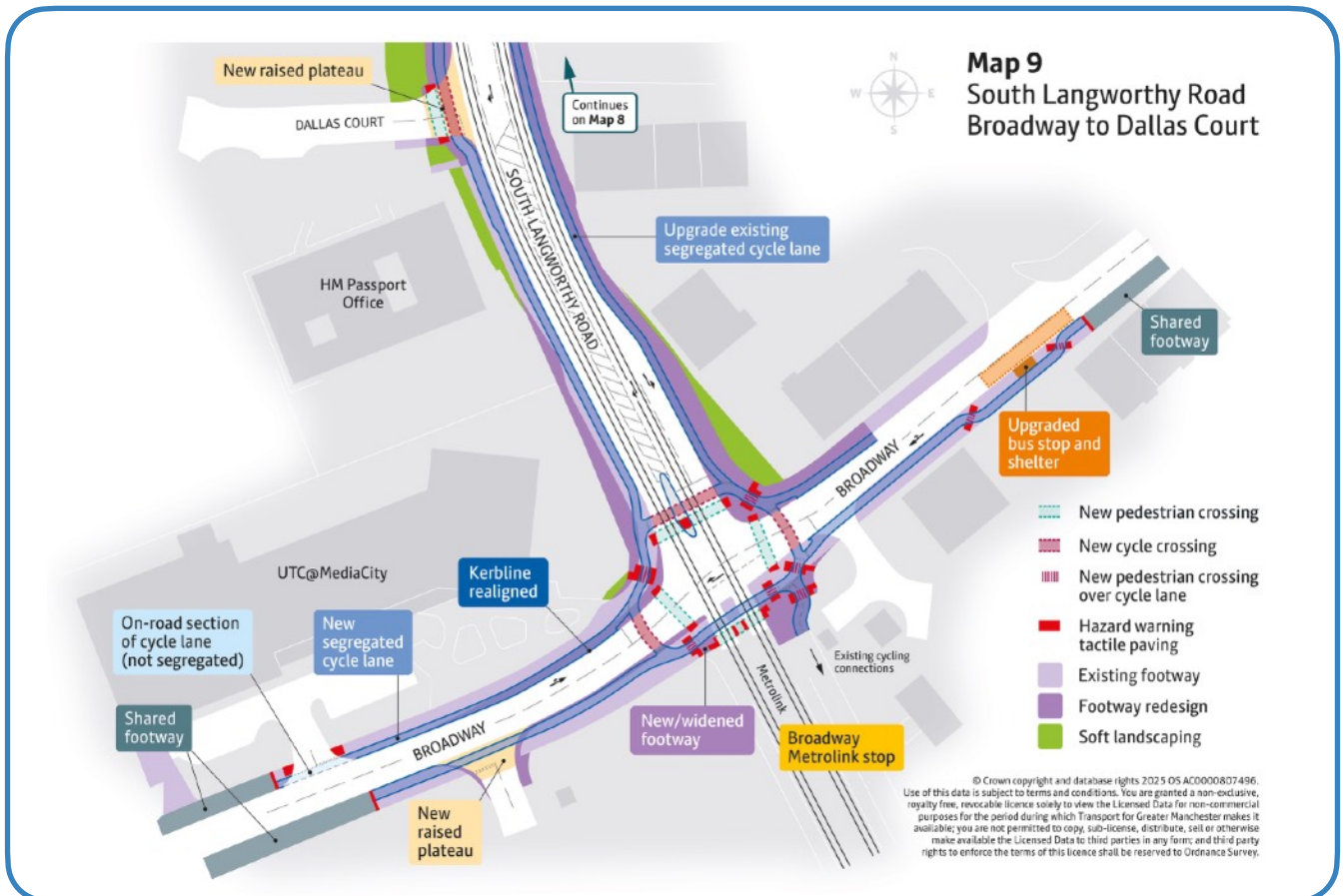


- Plant trees and bushes to make the area look better.



Question 33: Please tell us the difference our ideas for South Langworthy Road from Dallas Court to Salford City College on Map 8 would make to you, the journeys you make, or your business or organisation in the box below:

Map 9 - South Langworthy Road, from Broadway to Dallas Court



The changes we want to make on Map 9 are:



- Change the junction to make it easier and safer for people who walk, wheel or cycle.



- Put a new bus only restriction on South Langworthy Road, to reduce other vehicles and give more space for people to walk and wheel.

The bus only restriction is between Kansas Avenue and Montford Street, is shown on Map 7 and Map 8.



- Make a separate cycle track around the Broadway Junction to keep cyclists safe.



- Put crossings with traffic lights on all parts of the Broadway Junction to keep people safe and away from cyclists and vehicles.

On Map 9 we also want to:



- Change the cycle track on South Langworthy Road to keep cyclists away from people walking and vehicles.



- Join the cycle track to the cycle tracks on Broadway and Eccles New Road.



- Change junctions to smaller roads to make them safer for people walking or cycling.

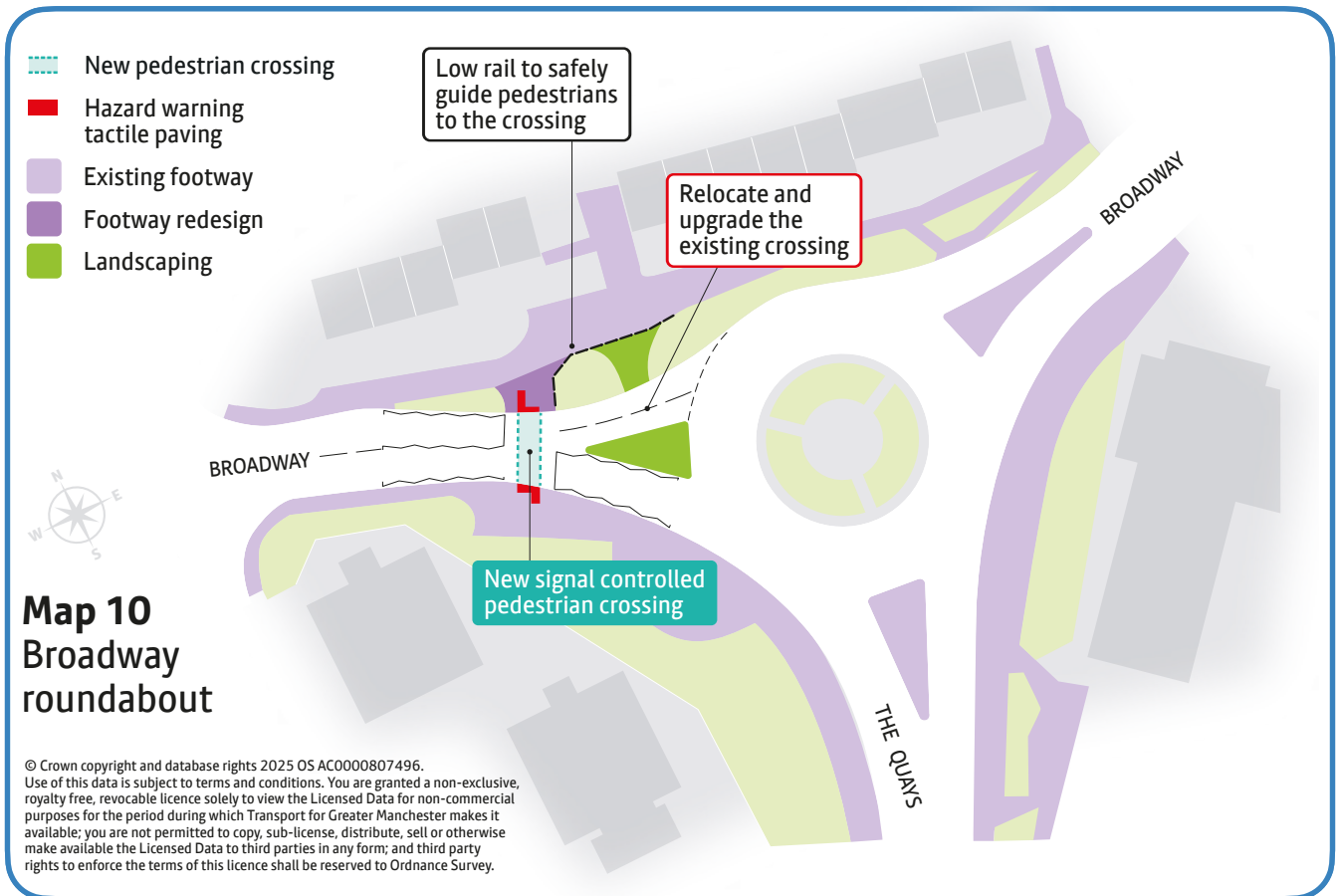


- Plant trees and bushes to make the area look better.



Question 34: Please tell us the difference our ideas for South Langworthy Road from Broadway to Dallas Court on Map 9 would make to you, the journeys you make, or your business or organisation in the box below:

Map 10 - Broadway roundabout



The changes we want to make on Map 10 are:



- Put a crossing with traffic lights on part of Broadway roundabout.



This would make it safer and easier to travel between The Quays and the nearby places where people live.



Question 35: Please tell us the difference our ideas for Broadway roundabout on Map 10 would make to you, the journeys you make, or your business or organisation in the box below:

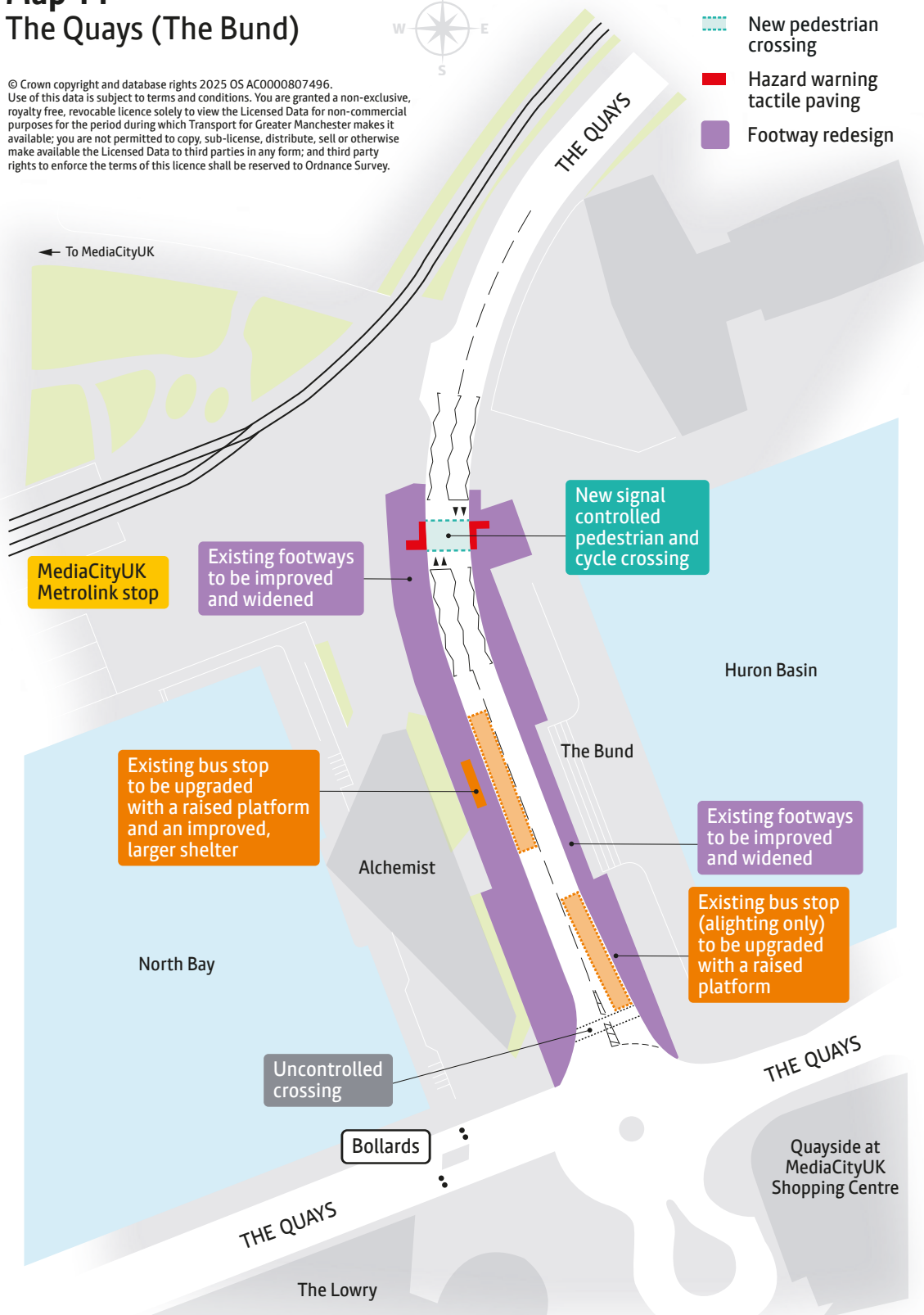
Map 11 - The Quays (The Bund)

Map 11 The Quays (The Bund)

© Crown copyright and database rights 2025 OS AC0000807496.
Use of this data is subject to terms and conditions. You are granted a non-exclusive, royalty free, revocable licence solely to view the Licensed Data for non-commercial purposes for the period during which Transport for Greater Manchester makes it available; you are not permitted to copy, sub-license, distribute, sell or otherwise make available the Licensed Data to third parties in any form; and third party rights to enforce the terms of this licence shall be reserved to Ordnance Survey.



-  New pedestrian crossing
-  Hazard warning tactile paving
-  Footway redesign



The changes we want to make on Map 11 are to:



- Put a crossing with traffic lights on The Quays Road, to make it safer and easier to travel between MediaCityUK and Huron Basin.



- Make pavements wider and better to support all the people who walk and wheel through the area.



- Reorganise and move things on the street like bins and signs, to make streets easier to use.



- Make bus stops outside The Alchemist easier to use.



- Build a bigger bus shelter so more people can use it.



Question 36: Please tell us the difference our ideas for The Quays (The Bund) on Map 11 would make to you, the journeys you make, or your business or organisation in the box below:



Question 37: If you would like us to tell you more about this project in the future, please write your email address here:

Questions about you



We want to make sure we hear from lots of different groups of people who travel in or around Manchester.



Answering these questions will help us to check who we have heard from.

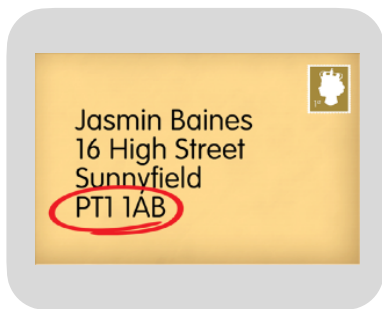


You do not have to answer any of these questions if you do not want to.



You can read how we keep your information safe and private on our website:

tfgm.com/privacy-policy



Question 38: What is your postcode?



Question 39: How old are you?

Please tick 1 box.

☐

16

☐

17 to 18

☐

19 to 24

☐

25 to 34

☐

35 to 44

☐

45 to 54

There are more answers on the next page.

☐

55 to 59

☐

60 to 64

☐

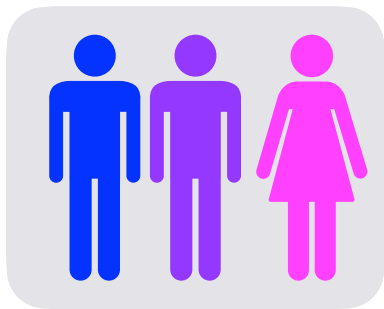
65 to 74

☐

75+

☐

I do not want to say



Question 40: What is your gender?

This means whether you are a man, woman or describe yourself in another way.

Please tick 1 box.

☐

Woman

☐

Man

☐

Non-binary

☐

Agender

☐

I use a different term. Please describe here:

☐

Prefer not to say



Question 41: Do you have a disability or health condition that affects how you do everyday things, like cleaning, shopping or making meals?

Please tick 1 box.

☐

Yes, it affects me a lot

☐

Yes, it affects me a little

☐

No

☐

I do not want to say



Question 42: If you have a disability or health condition, please tell us how it affects you:

Please tick all that apply to you.

- ☐ It affects how I walk or move around
- ☐ It affects my breathing or makes me tired
- ☐ It makes it difficult for me to balance
- ☐ It makes it difficult to lift or carry heavy things
- ☐ It affects whether I can use my hands
- ☐ It means I use a wheelchair
- ☐ It affects my sight
- ☐ It affects how I speak
- ☐ It affects my hearing

There are more answers on the next page.

☐

It is a learning disability

☐

It makes it difficult to remember

☐

It affects my **mental health** – this means how you think, feel or behave

☐

I have a condition that affects how I behave, like autism or ADHD

☐

I have a health condition that I have had for a long time

☐

It affects me in a different way. Please tell us how it affects you here:

☐

I do not want to say



Question 43: What is your ethnic group?

Please tick 1 box.

White

☐

English, Welsh, Scottish, Northern Irish or British

☐

Irish

☐

Gypsy or Irish Traveller

☐

Any other White background

Mixed

☐

White and Black Caribbean

☐

White and Black African

☐

White and Asian

☐

Any other mixed background

There are more answers on the next page.



Asian

☐

British

☐

Indian

☐

Pakistani

☐

Bangladeshi

☐

Chinese

☐

Any other Asian background



Black

☐

African

☐

British

☐

Caribbean

☐

Any other Black background

There are more answers on the next page.



Other

☐

Arab

☐

Any other ethnic group

☐

I do not want to say



Question 44: Do you have a job?

Please tick 1 box.

☐

I work full time - 30 or more hours

☐

I work part time - between
16 and 30 hours

☐

I work part time - less than
16 hours

☐

I work but do not get paid for it

☐

I am a full time student

☐

I am a part time student

☐

I am an apprentice

☐

I am retired

☐

I look after my home and family

☐

I do not have a job

☐

I do have a job because I am ill or
disabled

☐

I do something else

☐

I do not want to say



Question 45: What is your **sexuality?**

Your **sexuality** means who you are attracted to.

Please tick 1 box.

☐

Bisexual

☐

Gay or lesbian

☐

Straight

☐

Pansexual, which means you are sexually attracted to people because of who they are and not their gender

☐

Asexual, which means you do not feel sexual attraction

☐

Other

☐

I do not want to say



Question 46: What is your religion?

Please tick 1 box.

☐

I do not have a religion

☐

Buddhist

☐

Christian

☐

Hindu

☐

Jewish

☐

Muslim

☐

Sikh

☐

Any other religion

Please tell us what your religion is
in the box:

☐

I do not want to say

How to send us your answers



Thank you for answering our questions.



Once you have finished the questions, post your answers to us in the envelope we have given you.



You do not need a stamp.



Or you can print off the survey and give it to staff at a drop-in session.



We need your answers by Sunday, 22 February 2026.

What will happen next



We will read what everyone thinks, and might change our plan.



We will put a report on our website about how we changed the plan.



We will ask you again what you think about the new plan.



Then we will decide which parts of the plan to do.